

Installation

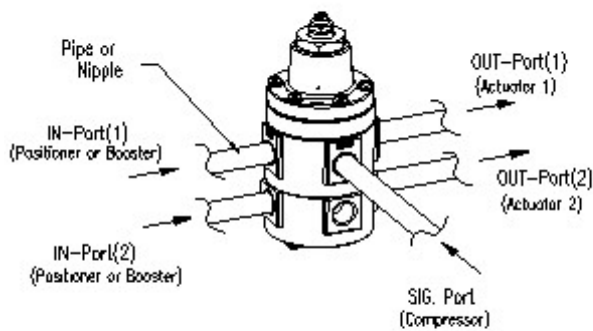
CAUTION

When installing the product, please follow below procedures.

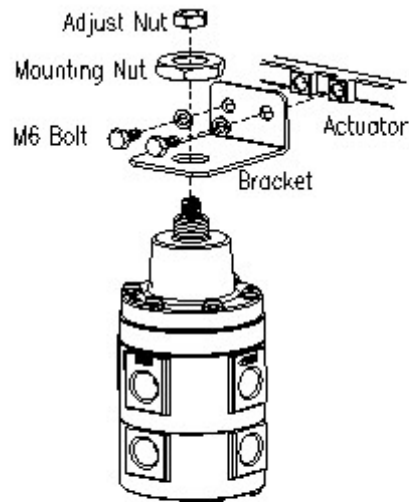
- Always wear safety equipments and follow safety procedures.
- Please operate within the range of specified capacity in the manual. If exceeded, the product can be damaged and may result in serious damages and accidents.
- Air must be clean, dry and non-corrosive, which must pass filter.
- Make sure to use pressure reading device when setting pressure level.
- Install in correct order when other devices are being operated. Make sure the lock up valve is connected to the actuator.

Pipe Connection

YT-400 / YT-405 must be installed between actuator and positioned without a bracket <Figure 1>, which can be installed on through the pipeline. Before connecting with pipeline, please make sure pipeline is empty, and the size of the pipeline is appropriate for required capacity. If YT-400 / YT-405 must be installed on the bracket, please make a bracket according to the product's dimension. <Figure 2>

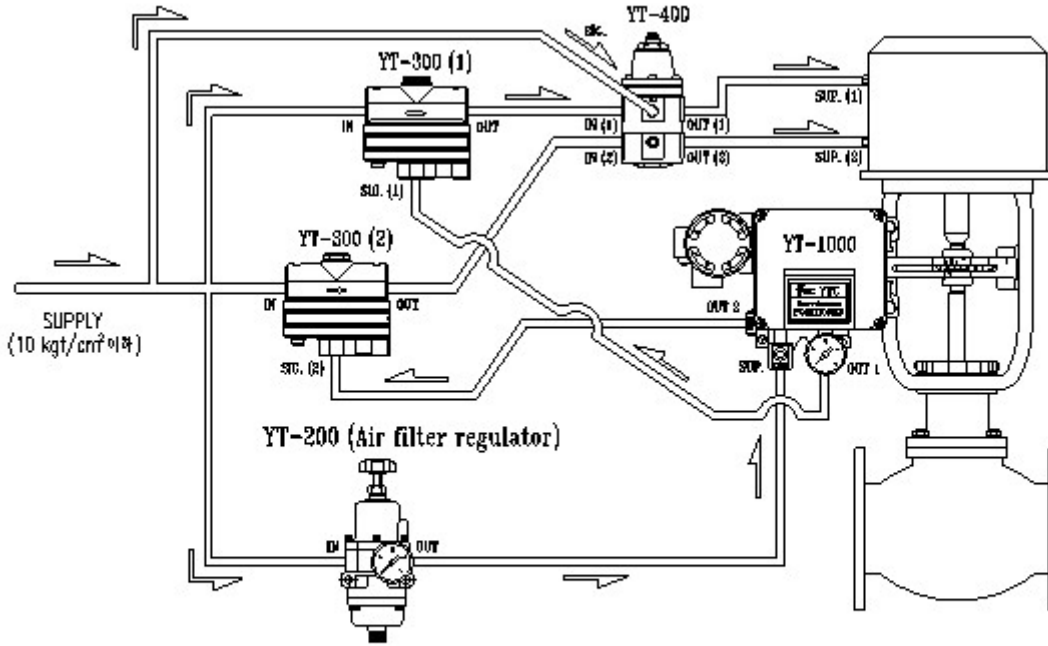


<Figure 1>



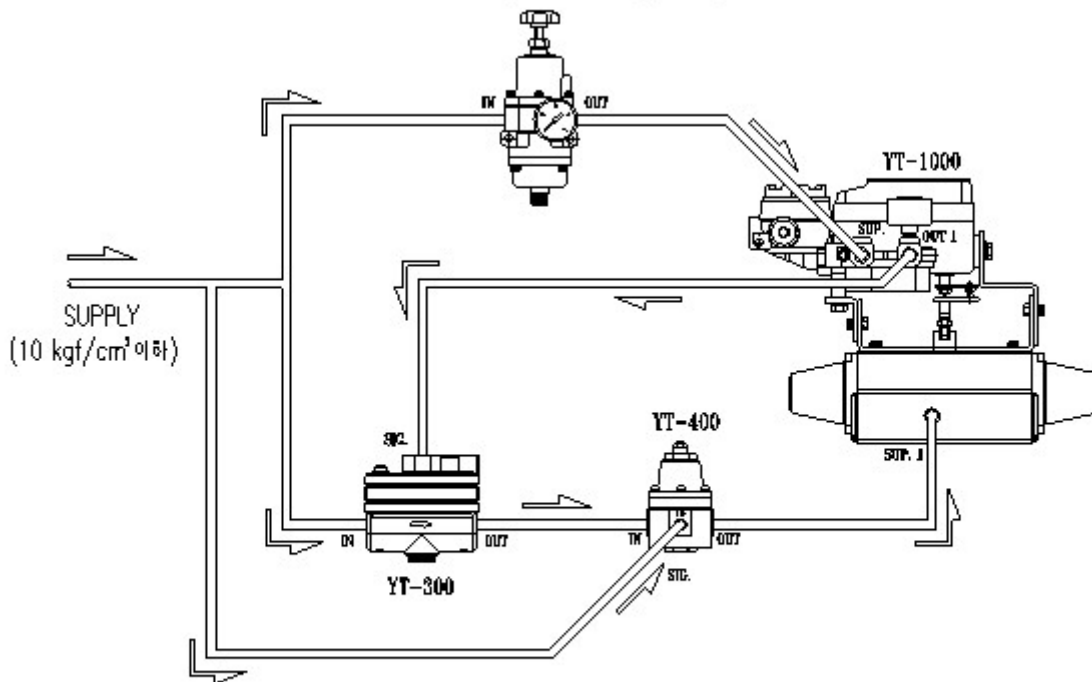
<Figure 2>

Install Example



<Linear Actuator Type>

YT-200 (Air filter regulator)



<Rotary Actuator Type>